

16 Cross Street, Hoxne, Suffolk

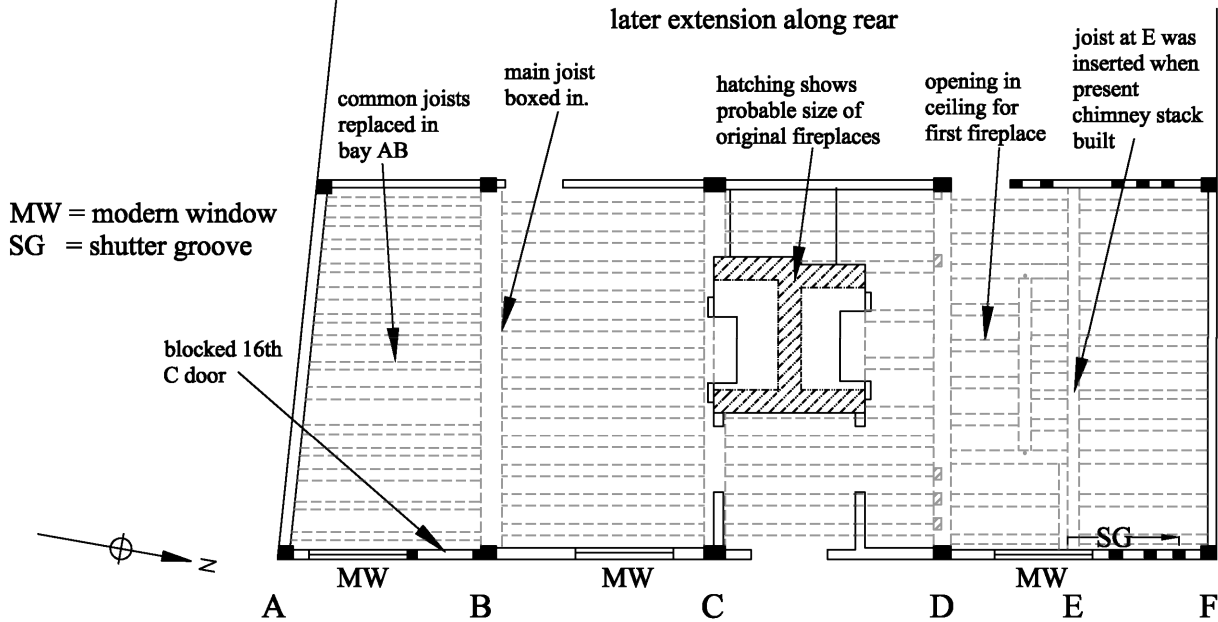
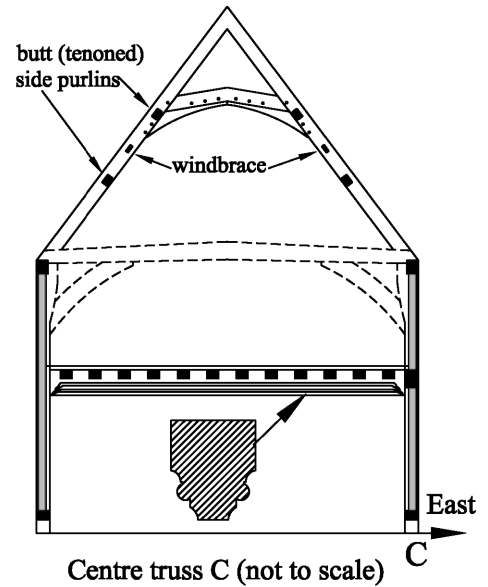
Map ref: TM 183762

This 16th century timber framed two storey house was converted to a lobby entrance house in the 17th century by building a back-to-back chimney stack in the high end bay of the hall against the hall's centre truss C as shown above.

In the 16th century it was built with a shop/workshop at the south end of a 19ft (5.8m) long two-equal-bay hall that was heated by a fireplace at the north end - the evidence for which is the opening in the ceiling of the room to the right of the front door - and to the north of that was an unheated parlour. The first floor was open to the roof and had a separate chamber over the workshop/shop, the partition on truss B partly surviving but the rest over the hall and parlour was undivided. The tie-beam on truss D has been removed.

The southern ground floor room was probably a shop or workshop as it had a separate entrance - the doorframe survives - originally flanked by a large window. It is possible that this southern bay was divided into two rooms. The joists in this bay appear to be replacements and the main joist on truss B is boxed in and not visible.

There is no evidence for the position of the stairs, but there would have been some in the south bay AB and probably another set in the north parlour DF.



Ground plan today after 17th century conversion to a lobby entrance house

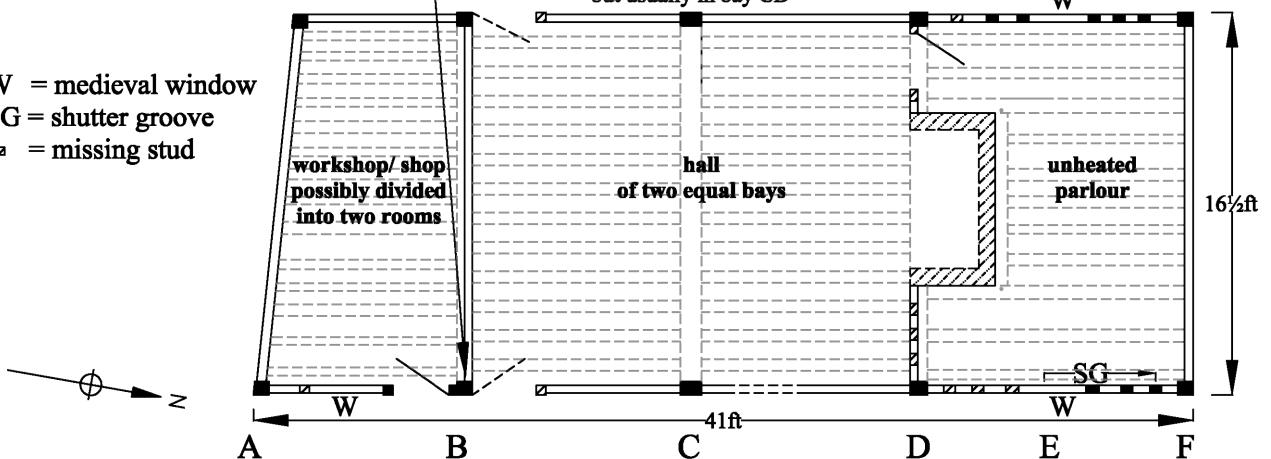
Approximate Scale
Copyright John Walker May 2018

There was a partition under joist B - see evidence of mortice for down brace in east post of truss B

Little evidence for entrance to hall, but usually at the end furthest from fireplace as suggested here. No evidence for hall window positions, but usually in bay CD

Common studs originally recessed and plastered over externally except in north gable F where the studs were exposed externally

W = medieval window
SG = shutter groove
□ = missing stud



Original 16th C ground plan